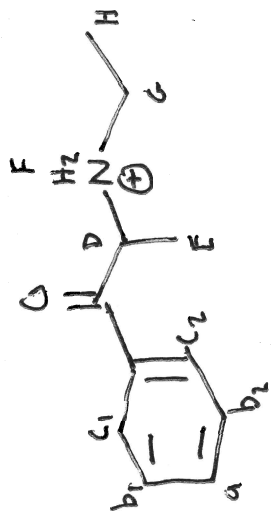


ETC-1.esp



H<sub>2</sub>O  
3.372

F H  
-1.476  
-1.458  
-1.274  
-1.256

DMSO

G  
3.040  
2.940  
2.924  
2.911

D  
5.234  
5.216

b<sub>1</sub>, b<sub>2</sub>

a  
c<sub>1</sub>, c<sub>2</sub>

F

